

# LTE Patch Antenna



## Dual Band LTE Patch Antenna

The LTE Patch Antenna is a Dual Band Patch LTE antenna for use with Microhard cellular modems. This patch style antenna provides a high gain solution for applications that require an outdoor directional patch style antenna.

*LTE Dual Band*

*Directional Antenna*

*7 / 9 dBi Gain*

*Waterproof IP67*



## Specifications

<b>Frequency Range</b>	698 - 960 MHz / 1710 - 2700 MHz	<b>Polarization</b>	Vertical
<b>F/B Ratio</b>	>20dB	<b>Operating Temperature</b>	-40°C to +70°C
<b>Gain</b>	7 / 9 dBi	<b>Rated Wind Velocity</b>	60m/s
<b>Beam Width</b>	Horizontal: 30°   Vertical: 28°	<b>Connector</b>	N Female
<b>Output Impedance</b>	50 Ohm	<b>Dimensions</b>	9.85" W x 8.75" H x 2.55" D
<b>VSWR</b>	≤ 2.2	<b>Weight</b>	1.6 kg
<b>Max. Input Power</b>	50W	<b>Mounting Method</b>	Pole Mount (30-50mm)

## Contact Information

Copyright 2020 Microhard Systems Inc.  
Specifications subject to change without notice.

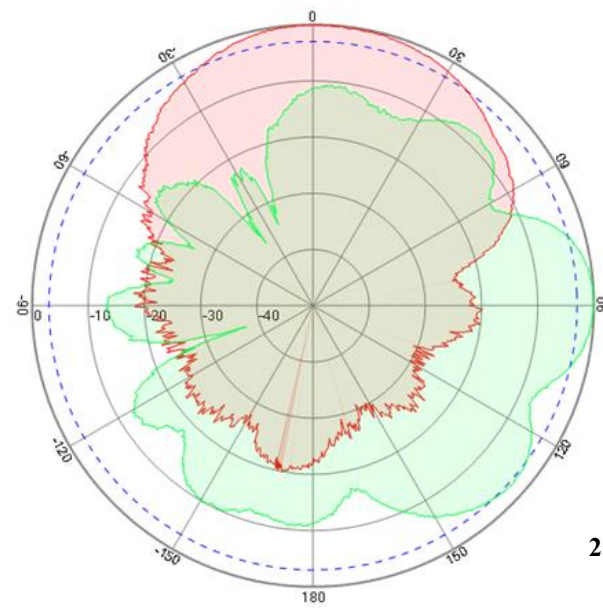
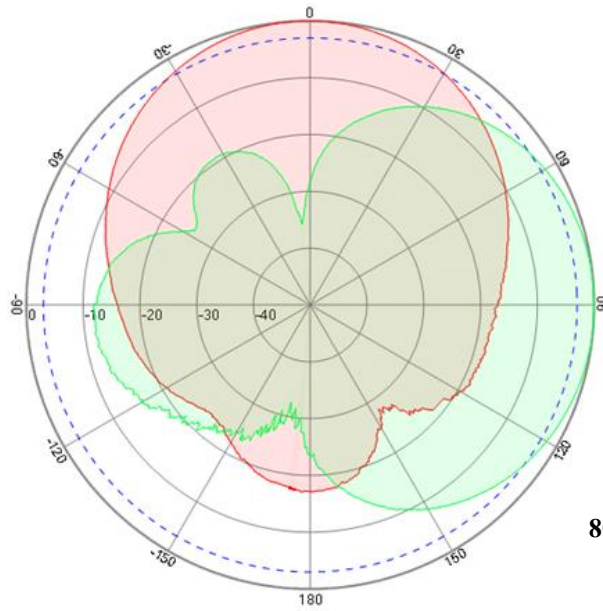
Microhard Systems Inc.  
150 Country Hills Landing N.W.  
Calgary, AB, Canada T3K 5P3

Email: [info@microhardcorp.com](mailto:info@microhardcorp.com)  
Tel: (403) 248-0028  
Fax: (403) 248-2762

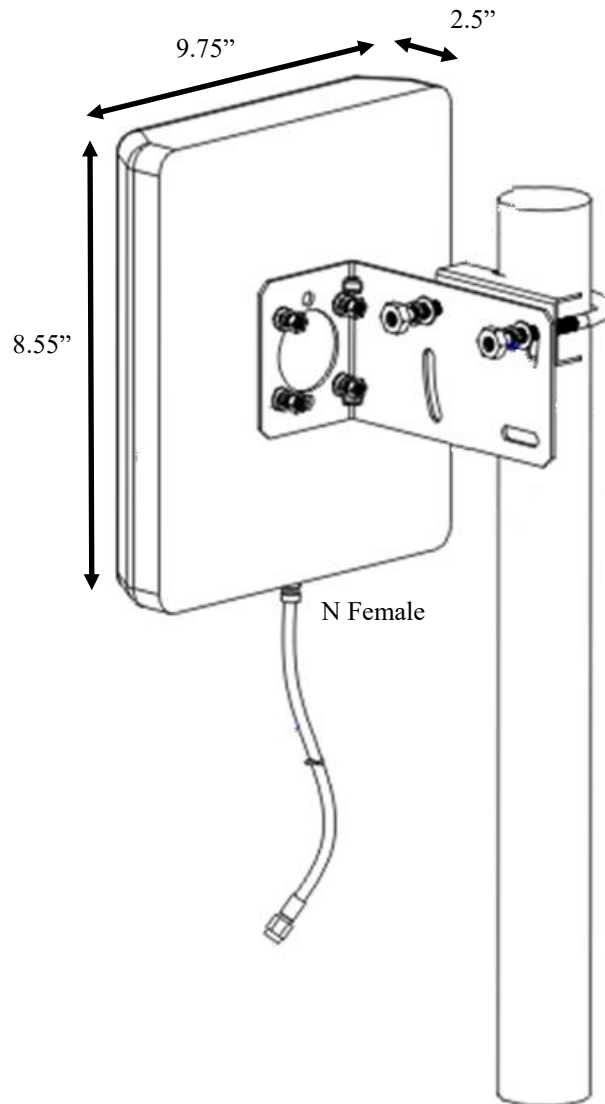


[www.microhardcorp.com](http://www.microhardcorp.com)

## Radiation Pattern



## Assembly Diagram



Pole Mount Bracket Kit Included.

Fits up to 2" Pole